

Carl Lindström A.G.
International series

Pekka Gronow
Immenstadt 24.5.2008

Carl Lindström AG, a German multinational

- Carl Lindström AG was one of the five most important record companies of the shellac period. It is also the least known. We need:
- a company history (economic history) outlining the development of the various Lindström branches
- a discographical history outlining the various numerical series used (catalogue and matrix)
- so much documentation has been lost, the two histories are needed because they support each other

Record labels as documents of business history

- In 1933, Lindström closed two agencies in Finland, and all business was directed to the Odeon agent. Homocord mx on Odeon
- Unissued Parlophone masters were also issued on Odeon (renumbered)



Carl Lindström AG: four periods

- 1904-1910: Lindström manufactures gramophones
- 1910-1925 Lindström buys several record companies and starts Parlophone label
- 1925-1931 Columbia buys Lindström; Homocord and Pathe join the concern
- 1931- Columbia, Gramophone and Lindström form EMI

1. "Pre-Lindström"

- Beka-Rekord AG, 1904-1910
- International Talking Machine Co (Odeon) and Fonotipia Ltd, 1903-1911
- Favorite 1906-1912
- Dacapo 1907-1912
- Lyrophon 190?-1912
- Carl Lindström AG (1904-) produces gramophones

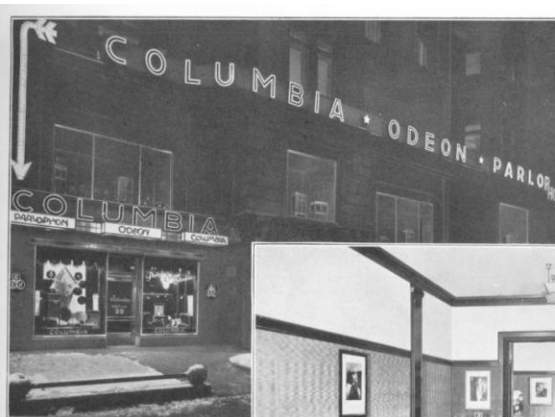
2. Independent Lindström, 1910-1925

- Lindström becomes a record company
- Odeon, Parlophon and Beka main product lines. Favorite, Lyrophon, Dacapo discontinued, Lindström takes over their artists and sales organisations
- Quick expansion (South America), exports important. Organisation varies from country to country.

3. Columbia purchases Lindström, 1926

- Columbia Graphophone Co (UK) buys Lindström, 5 Oct 1926. Lindström becomes part of a concern which also includes Columbia Phonograph Co (USA), Pathe (France) and Homocord.
- Few operational changes, expect Louis Sterling (Columbia) joins Lindström board. Some activities are gradually combined

After Columbia buys Odeon, some activities are combined, and matrix exchange begins.



Columbia-Musik-Haus,
Berlin W15, Kurfürstendamm 29
Die Berliner Westen-Filiale der
Odeon-Musik-Haus G. m. b. H.,
Berlin W. S.

fünfundzwanzig Jahren
geleistet wurde, wie sich
netzartig die Fäden zu
spinnen begannen, zu-
nächst über die engere

BERLIN

Schallplatte anfangs ledig-
lich amüsante Spielereien,
die kein Mensch ernst nahm.
Man fabrizierte diese Dinge
in mäßigem Umfange, ver-



Mahagoni-Saal mit Durchblick zu den Vorführsräumen



4. Lindström as part of EMI, 1931-

- Columbia and Gramophone merge to form EMI, 20 Apr 1931. Lindström becomes part of EMI, head office stays in Berlin
- In most countries, Odeon, Columbia and HMV still have separate sales agents. In South America, Odeon + Columbia combined
- Coordination of technical operations

Lindström's international organisation, 1920s-1930s

Columbia.. (1925).....	Carl Lindström AG
Columbia (USA)	Parlophone Ltd, London
Okeh Phonograph Co (USA)	Nipponophone (1927, w.Columbia)
Homocord	Pathé Frères (1927, w.Columbia)
	Skandinaviska Odeon
	Argentina
	Poland
	Fonotipia Ltd (London)
	--- Fonotipia (Milano)
	--- Odeon (Paris)
	--- Odeon (Barcelona)
	--- Odeon (Wien)

Dietrich Schultz-Köhn: Die Schallplatte auf dem Weltmarkt (Berlin 1940)

Factories in major markets such as Austria, France, Spain, Sweden, UK...

JOACHIM BECK:

Nebestehendes Bild zeigt die Fabrikanlage in Wien, in der die Fabrikate der Carl Lindström A.-G. hergestellt werden. Jedes Land hat seine eigene Geschmacksrichtung. Im Donauland ist die Vorliebe für Straußsche Walzer ebenso groß wie für moderne Jazzmusik. —

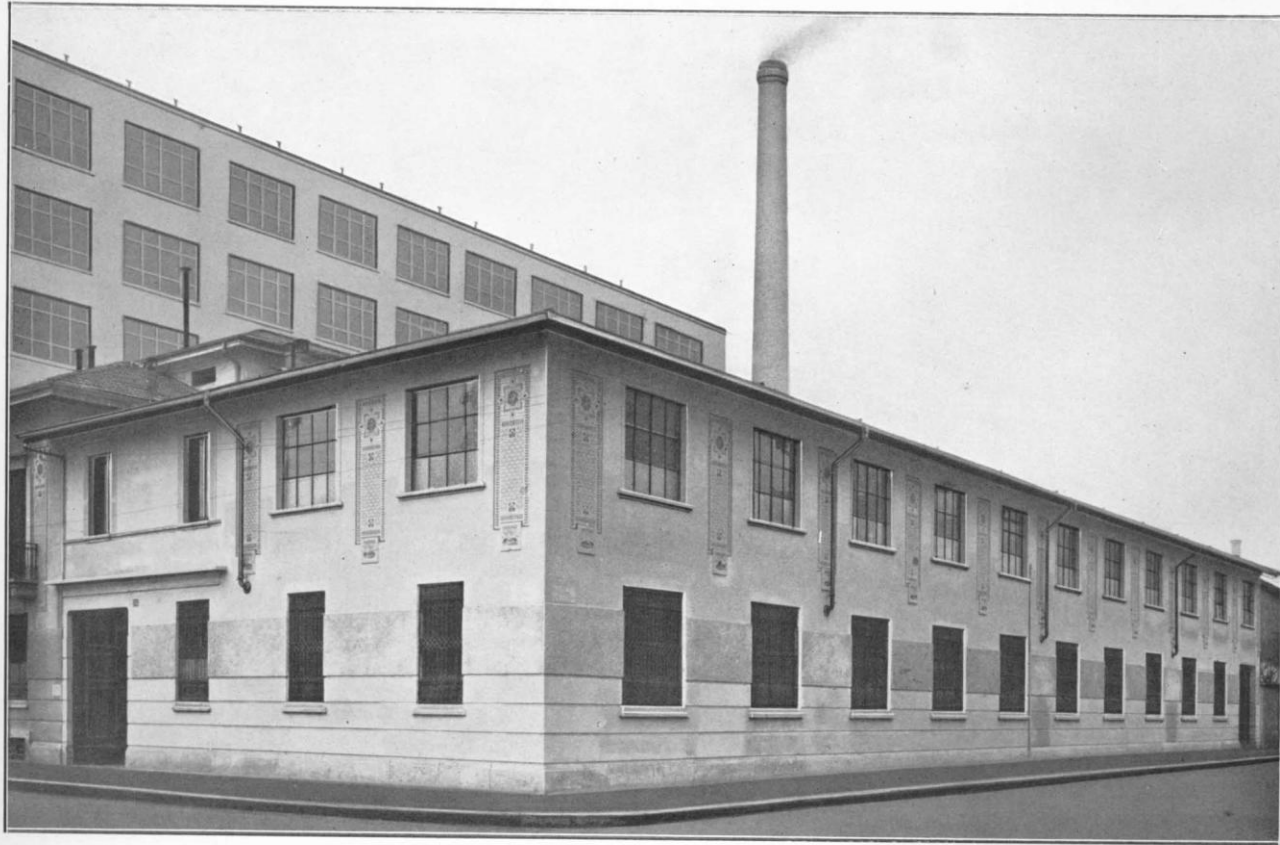


Die Fabrikanlage in Wien

Die untere Aufnahme vermittelt einen Eindruck von der Mailänder Fabrik, deren Aufgabe die Herstellung der Lindströmfabrikate für Italien ist. Ein neu eingerichteter Bau von imposantem Ausmaß. Deutsches Fabrikat erwirbt sich auch

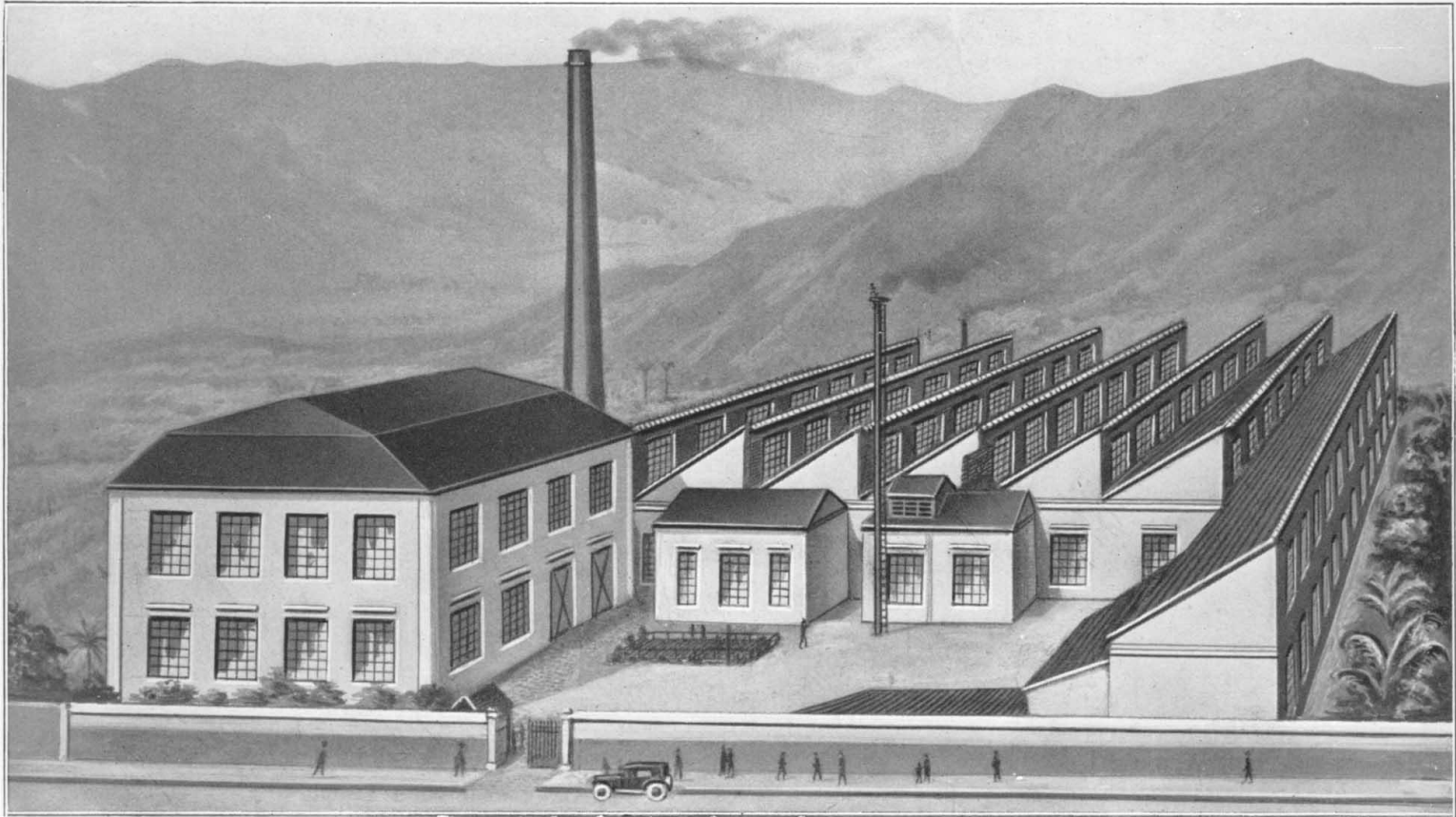
hier zahlreiche Freunde. Neben den Melodien italienischer Komponisten sind die Kompositionen deutscher und ausländischer Meister außerordentlich beliebt.

... Italy...



Außenansicht der Mailänder Fabrik

In South America, Lindström operated factories in Chile, Brazil...



Fabrikanlage in Rio de Janeiro (Brasilien)

...and Argentina.



Fabrikanlage in Buenos Aires (Argentinien)

Lindström's agent in Argentina was the Max Glücksmann company...



Das Personal des Hauses Max Glücksmann in Buenos Aires

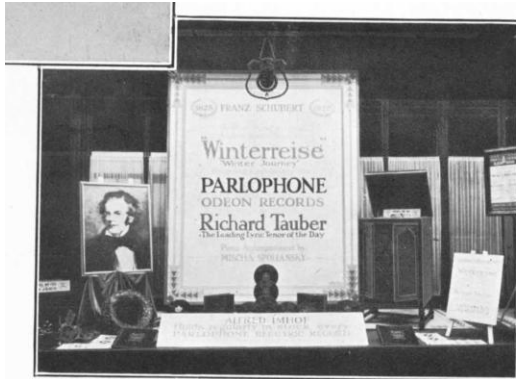


Außenansicht des Detailgeschäftes Max Glücksmann

In Argentina, Lindström used a special "Disco Nacional" label for domestic recordings



In the United Kingdom and parts of the British Empire, operations are concentrated on Parlophone (1923)



Zeugen deutscher Kunst in England

schen bleibt, kredner oder genau so ein wieder fort, wie es frünlich gegenmentalkünst-rtragsredner war dieser n früher, war Möglichkei-lie Ferne gab

zweiten großen Aufgabe, die sie von Anfang an zu erfüllen bemüht war.

Wissen vermittelte die Schallplatte: denn sie gab ja nicht bloßen Klang wie irgendein Automat — anders als die Puppe Olympia etwa in „Hoff-

THE PARLOPHONE CO. LTD.
85, CITY ROAD, LONDON, E.C.2.



Englischer Ausstellungsstand für Parlophone-Erzeugnisse



Parlophone-Verkauf in Melbourne

In the USA, Lindström's business partner was General Phonograph Co, founded in 1914 by Otto Heinemann, a former Lindström director. After 1926, OKeh became a subsidiary of US Columbia. The Lindström-Okeh relationship before 1926 is not clear.



In several countries, Lindström labels had different agents who competed with each other, although the records were pressed at the same factory. This way production and sales could be expanded. Usually there was one agent for Odeon and another for Parlophon-Beka, like in Netherlands...

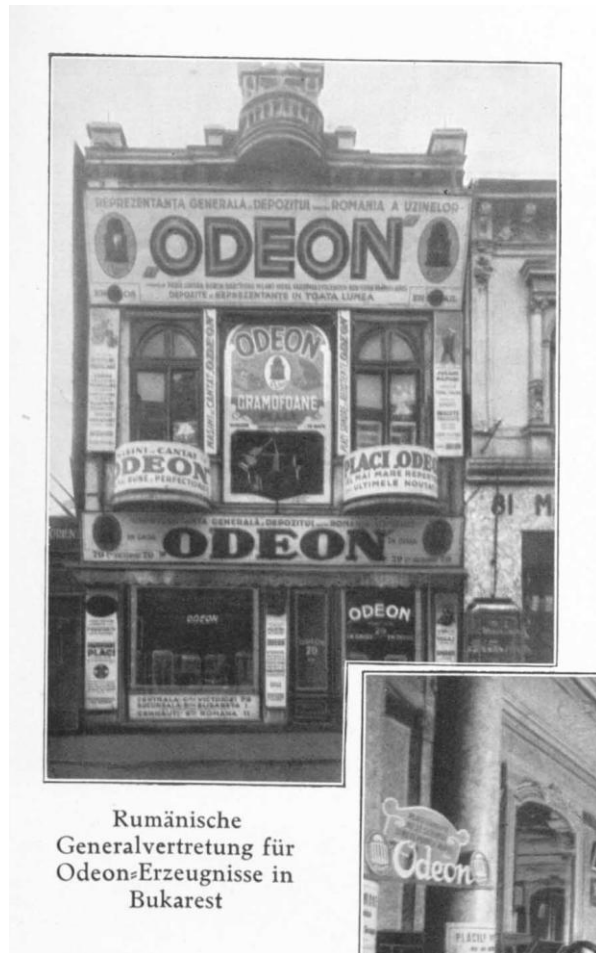


Odeon-Generalvertretung in Holland



Sitz der Parlophon-Beka-Generalvertretung in Rotterdam

... Romania...



Im Detailgeschäft der rumänischen Parlophon-Beka-Vertretung

... and Egypt.



Äußere Ansicht der
Odeon-Vertretung in Cairo



Parlophon-Geschäft in Alexandrien

During the economic depression, some agencies
were combined

- **Lindström agents in Finland, 1920s-1930s**
- Homocord 1928-1933: **Pohjoismainen Sähkö Oy**
- Parlophon 1928-1930: Parlophon-yhtymä
- Odeon 1928-1931: Heinrich Streubel
1931-1933: Helvar Oy
1933-1970s: **Pohjoismainen Sähkö Oy**

(Columbia and HMV also had separate agents
until the war)

Lindström had local agents in most countries and colonies, including Ethiopia (Abessinien) and British East Africa



Verkaufsraum der Odeon-
Filiale in Abessinien



Lindström-Verkaufsstelle in Dar-es-Salam

Local agents had the combined task of importing
"international" repertoire...



Auch in Konstantinopel sind
deutsche Schlager populär. (Im
Schaufenster „Friederike“
Plakate)



Odeon=Ausstellungs=Pavillon in Saloniki



Teilansicht einer Lindström=Ver=
tretung in Sofia

... they also produced local repertoire for Lindström labels, like this agent in Surabaya. The music was recorded and pressed by Lindström, but the local agents were responsible for artists & repertoire



Odeon-Bazar in Soerabaia



The international operations were controlled by a system of catalogue and matrix series, which was used to designate label, record size, price class, country/agent, etc. Example: Finland

Odeon catalogue series:

1920-25: A147900

1929-1943

A228000-675 25 cm black/red lbl

A228900-3 25 cm blue lbl

RA228925-26 25 cm "Kunstplatte"

AA210600-7 30 cm black

RXX210651-5 30 cm

1952-1959

PLD 1 – 200 25 cm Finnish

PLDX 1 - 30 cm Finnish

PLE 1 - 25 cm imports

Parlophone

B36000-112 25 cm

P62500 30 cm

Homocord 4-23000-23178

Matrix series

Odeon 1920-1959

Hf 1 – 2321 25 cm

(xxHf indicates 30 cm, same numerical sequence)

Parlophon 1929-1930

64000 25 cm

2-64900 30 cm

Homocord 1929-1933

TC

H 65000 25 cm

H-2-56000 30 cm

ODEON

Odeon was established in 1904 by Max Strauss and Heinrich Zunz. During the following 12 years the company absorbed a number of smaller German labels including Beka, Jumbo and Parlophon. They quickly established markets worldwide and successfully rivalled The Gramophone Company and Victor for world dominance. In 1926 the company was sold to Columbia, and then, in 1931 merged into the EMI group.

Abbreviations;

DEI = Dutch East Indies
 GE = Manufactured in Germany for export
 to an currently unidentified territory
 MF = Manufactured in France
 MG = Manufactured in Germany
 MGR = Manufactured in Greece
 MI = Manufactured in India
 MSP = Manufactured in Spain
 RU = Reunion Islands

Where a series date is definitely known, it is indicated by the date. Where a series date is approximate, it is indicated thus:

1. pre 1920 (International Talking Machine to 1914. Then Lindstroem)
2. 1920's/30s (ie Lindstroem)
3. originating in the 1920's/30's but known to still be in catalogue 1950/51 (and therefore EMI-controlled)

In addition to the 0-prefixes many 6 figure series without prefix were made in Germany for export. Scandinavian issue numbers overlap greatly. Some older series are re-used. Many older D-prefixed discs also had 6-figure numbers for wider circulation. French issues did not bear prefixes.

Bibliography; Gellat : Read & Welch : Rust (2) : Vernon (9)

PREFIX	SERIES	COUNTRY	SIZE	DATES	COMMENTS
A	100- (Tamil)	INDIA	10"		
A	900-3300	GERMANY	10"	1924-26	MG
A	2000-2315	ITALY	10"	2	
A	12600-	EGYPT	10"	2	
A	14000-	GERMANY	10"	1924-26	MG
A	16400-	HOLLAND	10"	2	
A	17700-	PERU	10"	2	
A	18000-	GERMANY	10"	1924-26	MG
A	19000-	GERMANY	10"	1924-26	MG
A	22100-	FRANCE	10"	2	
A	25500-	SWEDEN	10"	2	
A	27200-	FRANCE	10"	2	
A	28600-	GERMANY	10"	2	
A	29000-	CHINA	10"	2	MG
A	39000-	BALI	10"	2	

ODEON (cont)

A	40000-48000 (acoustic)	GERMANY	10"	1924-26	MG	Blue
A	45000-	ARGENTINA	10"	2		
A	47000-		10"			Blue
A	46000-	ARGENTINA	10"	3		
A	55000-	ARGENTINA	10"	3		
A	56000-	GERMANY	10"	1924-26	MG	Blue
A	59000-	GERMANY	10"	1924-26	MG	
A	60000-	GERMANY	10"	1924-26	MG	
A	132000-	SPAIN	10"	2		
A	136000-	PORTUGAL	10"	1926-	MG	
A	136300-	PORTUGAL	10"	1926-	MG	
A	136800-	PORTUGAL	10"	1926-	MG	
A	139000-	SPAIN	10"	2		
A	153000-	SPAIN	10"	2		Brown
A	154000-	GREECE	10"	2		Black
A	156100-	MOROCCO	10"	2	MF	
A	157600-	INDOCHINA	10"	2	MF	
A	157700-	VIETNAM	10"	2	MF	
A	158000-	PORTUGAL	10"	2		
A	161000-	AUSTRIA	10"	2		
A	162000-	SWEDEN	10"	2		Blue
A	163000-	BELGIUM	10"	2		
A	164000-	BELGIUM	10"	2		
A	165000-	FRANCE	10"	2		
A	166000-	FRANCE	10"	2		Blue
A	166400-	FRANCE	10"	2		
A	166900-	FRANCE	10"	2		Blue
A	167000-	ITALY	10"	2		
A	168000-	ITALY	10"	2		
A	169000-	CZECH	10"	2		
A	180000-	NORWAY	10"	2		
A	181000-	SPAIN	10"	2		
A	181700-	BOLIVIA	10"	2		
A	182000-	SPAIN	10"	2		
A	183000-	SPAIN	10"	2		
A	184000-	SPAIN	10"	1930-		Red
A	185000-	SPAIN	10"	2		
A	186000-	CZECH	10"	2		
A	186500-	BOHEMIA & AUSTRIA	10"	2		
A	187000-	PORTUGAL	10"	2	MG	
A	187500-	PORTUGAL	10"	2	MG	
A	187800-	PORTUGAL	10"	2	MG	
A	188000-	FRANCE	10"	c.1931/2		Red
A	188500-	FRANCE	10"			Red
A	189000-	AMERICA	10"			
A	190000-	GREECE	10"	2		
A	191000-	FRANCE	10"	2		
	(Language instruction series)					
A	192000-	BULGARIA	10"	2		Blue
A	192500-	SERBIA	10"	2		
A	193000-	ARGENTINA	10"	2		
A	194000-	ARGENTINA	10"	2/3		
A	195000-	ARGENTINA	10"	3		
A	196000-	ARGENTINA	10"	3		

ODEON (cont)

A	197000-	HUNGARY	10"	2	
A	198000-	HUNGARY	10"	2	Brown
A	199000-	RUMANIA	10"	2	
A	200000-	SPAIN	10"	2	
A	201000-	TUNISIA	10"	2	MF
A	202000-	TURKEY	10"	2	
A	203000-	SPAIN	10"	2	
A	204000-	INDONESIA	10"	2	
A	205000-	MOROCCO	10"	2	MF
A	206000-	CANTON			
		&HONG KONG	10"	2	
A	206100-	MALAY STR.	10"	2	
A	207000-	LITHUANIA	10"	2	
A	207700-	RUSSIA	10"	2	
A	207800-	ESTLAND	10"	2	
A	207900-	LETTLAND	10"	2	
A	208000-	SWITZ.	10"	2	
A	208400-	SWITZ.	10"	3	
A	209000-	SINGAPORE	10"	2	
A	220000-	SWITZ.	10"	2	
A	221000-	AUSTRIA	10"	2	
A	224000-	N.AFRICA	10"	2	MF
A	224200-	N.AFRICA	10"	2	
A	224600-	EGYPT	10"	2	MF
A	224700-	EGYPT	10"	2	MF
A	228000-	FINLAND	10"	2	
A	234000-	W.AFRICA	10"	2	
		(reported example is Ga dialect)			
A	235000-	HUNGARY	10"	2	Blue
A	237000-	ALBANIA	10"	2	MG Blue
A	238000-	FRANCE	10"	2	
A	239000-	M'GASCAR	10"	2	MF
A	239500-	REUNION			
		ISLES	10"	2	MF
A	242000-	E.AFRICA	10"	1930	
A	242200-	BUGANDA	10"	1930	MG
A	245000-245799	INDIA	10"	1929-31	Blue
A	245800-245999	INDIA	10"	1929-31	Red
		(Original pressings made in Germany: post-31 pressings made in Dum Dum.)			
A	246000-	MOZAMBIQUE	10"	1930	
A	248000-	W.AFRICA	10"	2	MG Purple
		(reported examples are in Hausa & Ibani dialect)			
A	249000-	FRANCE	10"	2	
A	250000-	FRANCE	10"	2	
A	251000-	CZECH.	10"	2	Blue
A	254000-	AUSTRIA	10"	2	
A	270200-	TURKEY	10"	2	
A	273000-	SPAIN	10"	2	
A	274000-	CZECH	10"	2	
A	279000-	FRANCE	10"	2	
A	279200-	ANTILLES	10"	2	MF
A	281000-	ANTILLES	10"	2	MF
A	281200-	ANTILLES	10"	2	MF
A	282000-	FRANCE	10"	2	
A	283000-	BRAZIL	10"	2	

ODEON (cont)

A	286000-	GERMANY	10"	2	
A	287000-	ALGERIA	10"	2	MF
A	288000-	BRAZIL	10"	2	Violet
	288100-	BRAZIL	10"	2	Violet
A	302000-308000	GERMANY	10"	1924-26	MG
A	311000-31799	GERMANY	10"	1924-26	MG
A	401000-	GERMANY	10"	1924-26	MG
AA	6000-	GERMANY	12"	1924-26	MG
AA	6100-6499	GERMANY	12"	1924-26	MG
AA	40000-	ARGENTINA	12"	2	
AA	50000-50300	GERMANY	12"	1924-26	MG
AA	50700-	GERMANY	12"	1924-26	MG
AA	53000-	GERMANY	12"	1924-26	MG
AA	55000-	GERMANY	12"	1924-26	MG
AA	57800-	GERMANY	12"	1924-26	MG
AA	68000-	AUSTRIA	12"	2	
AA	79000-79300	GERMANY	12"	1924-26	MG
AA	121000-	SPAIN	12"	2	
AA	123000-	FRANCE	12"	2	
AA	125000-	ARGENTINA	12"	3	
AA	151000-	BELGIUM	12"		
AA	170000-	FRANCE	12"	2	
AA	171000-	FRANCE	12"	2	
AA	172000-	ITALY	12"	2	
AA	173000-	SPAIN	12"	2	
AA	174000-	PORTUGAL	12"	2	
AA	175000-	FRANCE	12"	2	
AA	176000-	SERBIA	12"	2	
AA	176400-	ALBANIA	12"	2	
AA	176500-	GREECE	12"	2	
AA	176700-	BULGARIA	12"	2	
AA	176800-	BOHEMIA			
		& AUSTRIA	12"	2	
AA	176900-	GREECE	12"	2	
AA	177000-	ARGENTINA	12"	2	
AA	177500-	ARGENTINA	12"	2	
AA	178000-	HOLLAND	12"	2	
AA	178500-	RUMANIA	12"	2	
AA	179500-	ARGENTINA	12"	2	
AA	210000-	DENMARK	12"	2	
AA	210100-	NORWAY	12"	2	
AA	210200-	SWEDEN	12"	2	
AA	210500-	LITHUANIA	12"	2	
AA	210600-	FINLAND	12"	2	
AA	210700-	SWITZ.	12"	3	
AA	210800-	LETTLAND	12"	2	
AA	263000-	ARGENTINA	12"	2	
AR	100-	AUSTRALIA	10"		
AR	1000-	AUSTRALIA	12"		
AR	1100-	AUSTRALIA	12"		
B		BELGIUM	10"	2	
B		BULGARIA			
B	4000-4499	GERMANY	11"	1904/5	
B	35000-	SWITZ.	10"	2	
BA	400-599	INDIA	10"	1934-37	Blue
C	5000-	BRAZIL	12"	3	

Oy. Yleisradio Ab.
Åanilevystö
Skiivarkivet

ODEON (cont)

C	7000-	BRAZIL	12"	3		
CA	1000-	INDIA	10"	1934-37	Blue	
CHC	1-	CHINA				
D		NORWAY	10"	2		
D	100-999	DENMARK	10"	2/3		
D	1000-5699	SWEDEN				
		& DENMARK	10"	2/3		
D	3000-	ITALY				
D	5800-	DENMARK	10"	2		
D	5900-	DENMARK	10"	2		
D	6000-	DENMARK	12"	2		
D	6021-	SWEDEN	12"	2		
D	6060-	SWEDEN	12"	3		
D	6400-	DENMARK	12"	3		
D	6900-	NORWAY	10"	3		
D	80500-	ARGENTINA	10"	1930		
DA	(404 seen)	INDIA	10"			
DK		DENMARK	10"	3		
DO	2000-	DENMARK	10"	3		
DO	7000-	DENMARK	12"	3		
DX	8000-	DENMARK	12"	3		
F	23000-	ITALY				
FA	224000-	N.AFRICA	10"			
FF	1000-	ARGENTINA				
		& BRAZIL	10"	2	Brown	
GA	1000-	GREECE	10"	2	Black	
	(acoustic)					
GA	1500-	GREECE	10"	1920's/30's	Black	
GA	1800-	GREECE	10"	1920's/30's	Black	
GA	7000-	GREECE	10"	1930's	Black	
GA	7100-	GREECE	10"	1930's	Black	
GA	7500-	GREECE	10"	1930's/40's	Black	
GA	7600-	GREECE	10"	1930's/40's	Black	
GA	7700-	GREECE	10"	1950's	White	
GA	7800-	GREECE	10"	1950's	White	
GA	7900-	GREECE	10"	1950's	White	
GHM	1-	MALAYSIA	10"		MI	
GO		ITALY	10"		Gloria	
GOX		ITALY	12		Gloria	
GRX	(4004 seen)	GREECE	10"			
GT	122000-	TURKEY	10"	2		
GXX	3000-	GREECE	12"	1930's		
H	18000-	ITALY	10"			
JXX	81000-	GERMANY		1924-26	MG	
L	14000-	ITALY	10"			
LA	202000-	ARABIC	10"	2	MG Maroon	
LA	270100-	GREECE	10"	2		
LA	270100-	TURKEY	10"	2		
LA	270200-	AFRICA	10"	2		
LA	270300	TURKEY	10"	2	Black & White Cream & Brown	
LA	270600	TURKEY	10"	2		
LA	275000-	TURKEY				
LDC						
LEC	1-	SINHALESE	10"			

ODEON (cont)

LEC	1000-	CHINA	10"			
LX	99900-	GERMANY	10"	1924-26	MG	
LXX	9000-	GERMANY	12"	1924-26	MG	
LXX	9500-	GERMANY	12"	1924-26	MG	
LXX	76800-76999	GERMANY	12"	1924-26	MG	
LXX	80900-	GERMANY		1924-26	MG	
LXX	81100-	GERMANY		1924-26	MG	
LXX	99900-	GERMANY		1924-26	MG	
M	6000-	ITALY		1920's		
	(6038=1928)					
MJJ	1- or 100-	INDIA				
N	6000- or 6500-	ITALY				
ND		NORWAY				
OB	(5001 seen)	INDIA			MG	
OD		AUSTRALIA	10"			
OE	100-	SPAIN	10"			
OF	5000-	ENGLAND	10"	1935-39		
OK					MUK	
ONY		USA				
OP					MUK	
OR	800(?) - 2700	ENGLAND	10"	1928-38		
OS		DENMARK				
OT	100-	ENGLAND	10"			
	(Parlophone logo)					
P	11000-	ITALY	10"			
PL			10"			
PLA	1-	ARABIC	10"		MUK	
	(Incl. Yemen)					
PLB	1-	N.AFRICA	10"		MUK	
PLD		FINLAND	10"	1951-		
PLE		FINLAND	10"	1951-		
PLG		FINLAND	12"	1951-		
PLJ	1-105	GOLD COAST	10"	1950's	MUK	
PLK	1-38	GOLD COAST	10"	1950's	MUK	
PLR	4000-	GOLD COAST	10"	1950's	MUK	
	(PLJ/PLK/PLR (at least) manufactured by EMI at Hayes, on behalf of Parlophone, marketed as Odeon for the Swiss Trading Co. on the Gold Coast)					
PO		ENGLAND				
	(Parlophone logo)					
R	20000-	ENGLAND	12"			
	(Parlophone logo)					
R	21000-	ITALY	12"?			
R	30000-	ENGLAND	12"			
	(Parlophone logo)					
RA	20200-	EGYPT	10"	2	MG Maroon	
RA	204500-	JAVA	10"	2		
RA	222000-	FRANCE & GERMANY	10"	2		
RD	1000-	DENMARK	10"	2		
RO	20000-	ENGLAND	10"			
	(Parlophone logo)					
RX	5500-5899	GERMANY	10"	1924-26	MG	
RX	39000-	GERMANY	10"	1924-26	MG	
RX	50000-50300	GERMANY	10"	1924-26	MG	
RX	62000-	GERMANY	10"	1924-26	MG	

ODEON (cont)

RX	64300-	GERMANY	10"	1924-26	MG	
RX	64800-	GERMANY	10"	1924-26	MG	
RX	64900-	GERMANY	10"	1924-26	MG	
RX	69000-	GERMANY	10"	1924-26	MG	
RX	92000-92900	GERMANY	10"	1924-26	MG	
RX	98000-99800	GERMANY	10"	1924-26	MG	
RXX	8000-8299	GERMANY	12"	1924-26	MG	
RXX	8500-8699	GERMANY	12"	1924-26	MG	
RXX	76000-76799	GERMANY	12"	1924-26	MG	
RXX	80000-80300	GERMANY	12"	1924-26	MG	
RXX	80600-80899	GERMANY	12"	1924-26	MG	
SA	100-199	INDIA	10"	1934-37	Blue	
SA	250-299	INDIA	10"	1934-37	Blue	
SA	3000-	INDIA	10"	1934-37	Blue	
SA	162,000-	SCAND.				
SB	2000-2999	INDIA	10"	1934-37	Red	
SD	5500-	DENMARK	10"	2		
SD	5600-	ARGENTINE	10"	1930		
SR	5000-	INDIA	12"	1934-37	Red	
SS	4000-	INDIA	12"	1934-37	Blue	
TA	5100-	GREECE	10"	1930's		
TW		ITALY	10"	1940's	Green	
UAA	60000-64999	GERMANY	12"	to 1925		
UAA	50000-50300	GERMANY	12"	to 1925		
UAA	57000-	GERMANY	12"	to 1925		
UAA	79000-	GERMANY	12"	to 1925		
UX	5000-	GERMANY	11"	1924-26	MG	
UX	5100-	GERMANY	11"	1924-26	MG	
UX	5400-	GERMANY	11"	1924-26	MG	
UX	23000-	GERMANY	11"	1924-26	MG	
UX	25000-25999	GERMANY	11"	1924-26	MG	
UX	51000-52900	GERMANY	11"	1924-26	MG	
X	500-	BRAZIL	10"	1902-		
X	1000-	BRAZIL	10"	1902-		
X	3000-	BRAZIL	10"			
X	5000-	N.AFRICA				
		& EGYPT	10"			
X	35000-	TURKEY	10"	1		
X	45000-	ARABIC	10"	1		
		(probably also includes Turkish recordings)				
X	46000-	GREECE	10"	1/2?		
X	54000-	TURKEY	10"	1/2		
X	55000-	EGYPT(?)	10"	2		
X	97100-	ITALY	10"	2	MG	
		(although aimed, apparently, at an Italian market, some at least in this series were recorded in France by Italian artists.)				
X	13000-	ARABIC	10"	2		
X	131000-	TURKEY	10"	2	MGR	
XB	34000-34600	GERMANY	12"	1904/5		
XB	50000-50051	GERMANY	12"	1905		

ODEON (cont)

SUFFIXED NUMBERS

2000-	A	ITALY	10"	2
3000-	B	ITALY	10"	2
15000-	B	ITALY	10"	2
	C	ITALY	10"	2
5000-	E	ITALY	12"	2
5000-	F	ITALY	12"?	2
23000-	F	ITALY	12"	2
10400-	GO	ITALY	10"	
12200-	GO	ITALY	10"	2
	(Including Sicilian)			
17200-	GO	ITALY	10"	2
	(Including Tuscan & Romany)			
17300-	GO	ITALY	10"	
17400-	GO	ITALY	10"	
17480-	GO	ITALY	10"	2
	(Including Venetian)			
17500-	GO	ITALY	10"	2
	(Including Sicilian)			
17600-	GO	ITALY	10"	2
19000-	GO	ITALY	10"	2
19300-	GO	ITALY	10"	2
	(Including Sardinian)			
19400-	GO	ITALY	10"	2
19500-	GO	ITALY	10"	2
19900-	GO	ITALY	10"	2
	(Including Sardinian & Romany)			
20000-	GO	ITALY	10"	2
	(Including Sicilian)			
20100-	GO	ITALY	10"	2
	(Including Sicilian)			
	H	ITALY	10"	2
	IP	ITALY	10"	2
6000-	M	ITALY	10"	2
6000-	N	ITALY	10"	2
6600-	N	ITALY	12"	2
	(Including Venetian, Romany & Sardinian)			
10000-	O	ITALY	?	2
500-	P	ITALY	10"	2
600-	P	ITALY	10"	2
700-	P	ITALY	10"	2
	(Including Tuscan)			
800-	P	ITALY	10"	2
5000-	P	ITALY	10"	2
21000-	R	ITALY	12"	2
3000-	TW	ITALY	10"	2
2000-	V	ITALY	12"	3
	Z	ITALY	12"	2

ODEON (cont)

WITHOUT PREFIX or SUFFIX

NB; At least some of the following probably bear alphabetical prefixes (most likely "A") but they have not yet been confirmed.

3 digits

101-114	BRAZIL	8"	1
("ODEONETTE" logo)			
200-	ENGLAND	10"	
400-	ARGENTINA	10"	1930
500-	ARGENTINA	10"	2
600-	ARGENTINA	10"	2
800-	ITALY?	10"	1925
850-	ARGENTINA	10"	2
900-	GERMANY	10"	2
(acoustic)			

4 digits (often found with an 0- prefix)

1000-	GE	10"	2	MG
1900-	JAVA	10"	2	
2000-	BRAZIL	10"	2	MG
2500-	RUSSIA	10"	2	MG Black
3000-	FRANCE	10"	2	MG
3000-	USA	10"	2	
(International series)				
3300-	GE	10"		
3400-	CAMBODIA	10"	2	
3500-3568	USA	10"	28-34	
(International series)				
3900-	GE	10"		
4000-	ARGENTINA	10"		MG
4031-4062	GE		1925	
4400-	BALI	10"	2	MG Black
4401-4500	GERMANY	10"?	1906	MG
4500-	GERMANY	10"	1925-	MG
4500-	ARGENTINA	10"	1930	
4501-4550	GERMANY	10"?	1906	MG
4551-4650	GERMANY	10"?	1906	MG
4600-	ARGENTINA	10"?	1930	
4651-4700	GERMANY	10"?	1907	MG
4700-	GERMANY	10"	1925-	MG
4701-4760	GERMANY	10"	1907	MG
4761-4800	GERMANY	10"	1908	MG
4800-	GERMANY	10"	1925-	MG
4800-	ARGENTINA	10"		
4801-4850	GERMANY	10"	1909	MG
4851-4900	GERMANY	10"	1910	MG
4900-	GERMANY	10"	1925-	MG
5000-	CROATIA			MG
5100-	EGYPT	10"	2	MG Black

5100-	&PERSIA			
5200-	ARGENTINA	10"		
5300-	ARGENTINA	10"		

ODEON (cont)

6000-	ARGENTINA	10"	2	
6300-	ARGENTINA	10"	1920's	
6306-15			1925	
6500-	ARGENTINA	10"	1920's	
(6586=1925)				
6600-	ARGENTINA	10"	1930	
6800-	ARGENTINA	10"	1920's	
6857-			1925	
7000-	ITALY	12"?	to '25	MG
7000-	ARGENTINA	10"	2	
7200-	GREECE	10"s	post 1945	
7400-	GREECE	10"		
7400-	ITALY	10"	2	MG Black
7400-	ARGENTINA	10"	1920's	
(7438-9=1925)				
7500-7700	GE	12"		
7500-	GREECE	10"	post 1945	
7600-	GREECE	10"	post 1945	
7613			1925	
7800-	ARGENTINA	10"	1930	
(7832=1930)				
8000-	AUSTRIA	10"	to '25	MG
8000-	ARGENTINA	10"	1920's	
(8047-55=1925)				
8000-	GERMANY	12"	post 25	MG
8100-	GERMANY	12"	post 25	MG
8200-	GERMANY	12"	post 25	MG
8201			1925	
8300-	GERMANY	12"	post 25	MG
8400-	GERMANY	12"	post 25	MG
8400-	ARGENTINA	10"	1930	
8500-	GERMANY	12"	post 25	MG
8600-	GERMANY	12"	post 25	MG
8700-	GERMANY	12"	post 25	MG
8800-	GERMANY			
8900-	POLAND	10"	pre-25	MG
8900-	ARGENTINA	10"	1930	
(8907-08=1930)				
9000-	ITALY	10"	pre-25	MG
9000-	GERMANY	12"	post 25	MG
9000-	ARGENTINA	10"	1930	
(9040=1930)				
9100-	GE	10"		
9500-	AUSTRIA	10"	pre '25	MG
9500-	GERMANY	12"	post 25	MG
9600-	ARGENTINA	10"		
(9652=1925)				
9800-	ARGENTINA	10"	1930	
(9838=1930)				
1150-	ARGENTINA	10"	1930	

ODEON (cont)

5 digits (prefix 0 all German manufacture)

01100-	GERMANY	10"	
01500-	AUSTRIA	10"	Blue
02200-	GERMANY	10"	Blue
02400-	GERMANY	10"	to 1933
(Hebrew series)			
02500-	GERMANY	10"	Blue
02670-	GERMANY	10"	1949
02800-	GERMANY	10"	Blue
02900-	GERMANY	10"	to 1933
(Hebrew series)			
03300-	GERMANY	10"	2
03600-	GERMANY	10"	3
03900-	GERMANY	10"	2
04000-	GERMANY	10"	2
04100-	GERMANY	10"	to 1933
(Hebrew series)			
04500-04515	GERMANY	10"	1932 Brown
04520-04530	GERMANY	10"	1933 Brown
04531-04540	GERMANY	10"	1934 Brown
04541-	GERMANY	10"	1935 Brown
04600-	GERMANY	10"	c.1945- Red
04700-	GERMANY	10"	c.1945- Red
04750-	GERMANY	10"	c.1945- Yellow
04800-	GERMANY	10"	c.1929- Brown
(04827/1931 : 04843/1933 : 04853/1937)			
Copies reported in this series with light & dark brown labels are postwar pressings			
04900-	GERMANY	10"	2 Brown
(04907/1927 : 04918/1928 : 04946/1929 : 04968/1930 : 04984/1931)			
06500-	GERMANY	12"	
06600-	GERMANY	10"	to 1933
(Hebrew series)			
07500-	GERMANY	10"	2
07700-	GERMANY	10"	2
08400-	GERMANY	12"	3
08700-	GERMANY	12"	3
08800-	GERMANY	12"	3
09100-	GERMANY	12"	3
09500-	GERMANY	12"	3
09600-	GERMANY	12"	3
57000-	SPAIN		

5 digits

10001-10042	BRAZIL	10"	1907-13
10001-10999	BRAZIL	10"	1927-33
10001-	VENEZUELA	10"	
10200-	ARGENTINA	10"	1920's-30's
(10292-5=1925)			
10400	ARGENTINA	10"	1920's-30's
(10447=1925)			
10500-	ARGENTINA	10"	
10600-	ITALY		Blue

ODEON (cont)

10800-	BRAZIL	10"	
10900-	ARGENTINA	10"	1930
11000-	GERMANY	10"	1930
11001-11999	BRAZIL	10"	1933-41
(11180=1930)			
11000-	GERMANY	10"	1925-
11000-	SPAIN	10"	1914-25 MG
11000-11999	BRAZIL	10"	1925-41
(11010-13=1925)			
11100-	BRAZIL	10"	
11170-	ARGENTINA	10"	1930
11180-	ARGENTINA	10"	1930
11200-	GERMANY	10"	2 Blue
11300-	PORTUGAL	10"	2 MG
11400-	ARGENTINA	10"	1930
11500-	GERMANY	10"	2 Blue
11600-	GERMANY	10"	2 Blue
11700-	PORTUGAL	10"	2 MG
11700-	ARGENTINA	10"	1930
11800-	BRAZIL	10"	1930
(11865=1933)			
11900-	GERMANY	10	Blue
12000-	ARGENTINA	10"	1930-
12000-12199	BRAZIL	10"	1941-50
12200-12299	PORTUGAL	10"	MG
12300-12999	BRAZIL	10"	
13000-	SPAIN	10"	
13000-13999	BRAZIL	10"	1950-56
14000-	GE	10"	2 MG
14000-14888	BRAZIL	10"	1956-63
14300-	BRAZIL	10"	
16000-	ARGENTINA	10"	1930
16000-	ARGENTINA	10"	1925-
16100-	ARGENTINA	10"	1925-
16200-	ARGENTINA	10"	1930
17500-	ARGENTINA	10"	1930
18000-	HEBREW	10"	to '25 MG
18100-	ARGENTINA	10"s	1925-
18200-	ARGENTINA	10"	1925-
18300-	ARGENTINA	10"	1925-
18400-	ARGENTINA	10"	1925-
18600-	ARGENTINA	10"	1925-
18800-	ARGENTINA	10"	1925-
19000-	HEBREW	10"	to '25 MG
20000-	ARGENTINA	10"	1925-
21000-	ARGENTINA	10"	
23000-	HEBREW	10"	to '25 MG
23900-	RUSSIA	10"	MF
25000-	GE	10"	1925- MG
25000-	ARGENTINA	10"	1930
25100-	GERMANY	10"	1930's Blue
(25158=1934)			
25300-	GERMANY	10"	Blue
25500-	GERMANY	10"	Blue
25600-	GERMANY	10"	Blue
25700-	GERMANY	10"	Blue

ODEON (cont)

25800-	GERMANY	10"		Blue
26000-26289	GERMANY	10"	1925-39	MG White
26300-	GERMANY	10"		Blue
26398-	GERMANY	10"		
26400-	GERMANY	10"		
(26300-26400 are prewar series in dark blue with postwar pressings in white & blue)				
26500-	GERMANY	10"	c.1930	Blue
27600-	PORTUGAL	10"		MF
28000-	ARGENTINA	10"		
28150-	GERMANY	10"		Blue
28200-	GERMANY	10"		Blue
28500-	GERMANY	10"	1930-	Blue
28700-	N.AFRICA	10"	1930's	
29000-	AUSTRIA	10"		Blue
30000-	HOLLAND	10"	to '25	MG
30000-	SPAIN	8"		
30300-	ARGENTINA	10"		
30500-	ARGENTINA	10"		
30600-	ARGENTINA	10"		
31000-	GERMANY	10"	1925-	
31600-	EGYPT	10"	1913	
33000-	FRANCE	10"	1904-9	MF
33200-	ARGENTINA	10"		
34000-34999	FRANCE	10"	1904-9	MF
35000-	CROATIA	11"	to '25	MG
36000-	FRANCE	10"	1904-9	MF
37000-	BALI			
	& SIAM	10"		
37000-	TUNISIA	10"	2	MF
38900-	POLAND	10"	to '25	MG
39000-	FRANCE	10"	1904-9	MF
40000-	ARGENTINA	10"	2	MG
40000-40716	BRAZIL	10"	1902	
41000-	SPAIN	10"	1910	
41300-	ARGENTINA	10"		
41900-41987	SPAIN	10"	1910-	MG
42000-	FRANCE	10"	1904-09	MG
42000-	GE	10"	2	MG
44000-	CHINA	10"	2	MG
45000-	ARGENTINA	10"		
45000-	EGYPT	10"		
45200-	EGYPT	10"	1913-	
46000-	ARGENTINA	10"	2	MG
46000-	FRANCE	10"	1904-09	MG
47000-	GE	10"	2	MG
48000-	GE	10"	2	MG
49000-	GE	10"	2	MG
50000-50240	GERMANY	10"	1906	MG
50200-	GERMANY	12"		AC
50241-50497	GERMANY	10"	1907	MG
50428-50600	GERMANY	10"	1908	MG
50500-	GE	12"		AC
50601-50750	GERMANY	10"	1909	MG
50700-	GERMANY	10"	1910-12	MG
51000-	CZECH	10"	to '25	MG

ODEON (cont)

52000-	GE	10"	1904-	
52400-	ARGENTINA	10"	2	
53000-	GE	10"	1904-	
53000-	GERMANY	10"	1924	MG
53200-	GERMANY	10"	1911-23	MG
54000-	GE	10"	1904-	MG
55000-	ARGENTINA	10"		
55000-	FRANCE	10"	1904-09	MG
55000-	GERMANY	10"	1923-24	MG
55200-	CHILE	10"		
56000-	GE	10"	1904-	
57000-	GE	10"	1904-	
59000-	GE	10"	1904	MG
59000-	GE	10"	2	MG
60000-	US JAZZ	10"	2	MG
60000-60999	FRANCE	10"	1904-09	MG
61000-	ARGENTINA	10"		
64000-64299	GERMANY	10"	1904-	MG
64300-64500	GERMANY	10"	1907	MG
64501-64550	GERMANY	10"	1907	MG
64551-64638	GERMANY	10"	1907	MG
64639-64969	GERMANY	10"	1908	MG
67700-	GERMANY	10"	1911	MG
68000-68102	SPAIN	10"	1910	
68000-	AUSTRIA	12"		
69000-	GE	10"	1904-	
70000-70084	BRAZIL	10"	1908-12	
70501-70515	BRAZIL	10"	1908-12	
74300-	ARGENTINA	10"		
76005-76044	GERMANY	10"	1908	MG
76045-76601	GERMANY	10"	1909-17	MG
76602-	GERMANY	10"	1915-16	MG
76603?-	GERMANY	10"	1923	MG
76700-	GERMANY	10"	1915-19	MG
76800-	GERMANY	10"	1920-26	MG
76900-	GERMANY	10"	1915-21	MG
76900-	GERMANY	10"	1910-14	MG
79000-	GERMANY	10"	1904	MG
79000-	GERMANY	10"	1923-24	MG
79200-	GERMANY	10"	1912-21	MG
80000-	GERMANY	12"	1906	MG
80000-80004	GERMANY	10"	1906	MG
80000-	GERMANY	10"	1921-23	MG
80005-80009	GERMANY	10"	1907	MG
80010-80033	GERMANY	10"	1908	MG
80034-80063	GERMANY	10"	1909	MG
80100-	GERMANY	10"	1910-24	MG
80200-	GERMANY	10"	1920-26	MG
80300-	GERMANY	10"	1912-25	MG
80400-	GERMANY	10"	1926	MG
(acoustic)				
80500-	GERMANY	10"	1913	MF
80600-	GERMANY	10"	1926	MG
(acoustic)				
80700-	GERMANY	10"	1919-25	MG
80800-	GERMANY	10"	1915-24	MG

ODEON (cont)

80900-	GERMANY	10"	1924	MG
81000-	GERMANY	10"	1904-12	MG
81011-81024	GERMANY	10"	1917-18	MG
81025-81037	GERMANY	10"	1919	MG
81050--70	GERMANY	10"	1921	MG
86000-	FRANCE	10"	1904-09	MG
89000-89087	GERMANY	10"	1907	MG
90000-	INDIA	10"	1906-13	
90000-91285	MALAYSIA	10"	1906-	
(Far East-DEI-in use to 1926, marketed until 1931)				
90500-	DEI	10"	1909	
(Far East-Singapore-Chinese language.				
In use to 26, marketed to 31)				
91000-	INDIA	10"	1906-13	
93300-	GERMANY	10"	1911	MG
93600-	GERMANY	10"	1911	MG
94000-94999	INDIA	10"	1906-13	Red
95000-95999	INDIA	10"	1906-13	Brown
(in use to 1926, marketed until 1931)				
96000-96999	INDIA	10"	1906-13	Red
(in use to 1926, marketed until 1931)				
97000-	FRANCE	10"	1904-09	MG
98000-	GERMANY	10"	1904-22	MG
98100-	GERMANY	10"	1915-16	MG
99000-99349	GERMANY	10"	1904-22	MG
99350-99516	GERMANY	10"	1909	MG
99800-	GERMANY	10"	1910-11	MG
99900-	GERMANY	10"	1910-13	MG

6 digits (prefix 0 German)

011000-	GERMANY	10"	3
025000-	GERMANY	10"	3
031000-	GERMANY	10"	3
050000-	GERMANY	12"	3
050200-	GERMANY	12"	3
050500-	GERMANY	12"	3
(050 prefixes are autocouplings)			

6 digits

108000-108843	BRAZIL	10"	1907-12	
118000-	GE	10"	to '25	MG
118500-	GE	10"	to '25	MG
120000-120999	BRAZIL	10"	1912-14	
121000-121999	BRAZIL	10"	1915-21	
122000-122999	BRAZIL	10"	1921-26	
123000-123319	BRAZIL	10"	1925-27	
123800-	ARGENTINA	10"	1930's	
(123823=Feb.1938 : 123825=Oct.1938				
123828=Jan.1939 : 123832=May 1939				
123834=Jun.1939)				
123900-	ARGENTINA	10"	1930	
132500-	ARGENTINA	10"	1930	
136000-		10"		
137000-137107	BRAZIL	10"	1912-14	
141000-	ARGENTINA	10"		

ODEON (cont)

165000-	FRANCE	10"	1930's	
(165669=Jun.1939 : 165993=1950 catalogue)				
166000-	FRANCE	10"	1930's	
(166147=Mar.1937 : 166422=May 1937				
166443=Oct.1937 : 166476=Apr.1937(sic)				
166681=Oct.1937 : 166989=Nov.1938(sic))				
170000-		12"		
(170153-171120=1936/37 catalogue)				
173000-		12"		
177000-	ARGENTINA ?		1930	
177100-	ARGENTINA ?		1930	
177500-	ARGENTINA ?		1930	
(177 prefixes are classical issues)				
182000-	SPAIN	10"	2	Blue
184000-	SPAIN	10"	2	Blue
187000-		10"		
188900-	FRANCE	10"	1930's-1950's	
(188903=Mar.1939)				
192000-	RUSSIA	10"	2	
193300-	ARGENTINA	10"	1930	
(North American recordings)				
193400-	ARGENTINA	10"	1930	
(North American recordings)				
195000-	CHILE	10"		
195500-	ARGENTINA	10"	1930	
196000-	CHILE	10"		
196500-	ARGENTINA	10"	1930	
199300-	ARGENTINA	10"	1930	
204000-	SPAIN	10"		
205000-	TURKEY?	10"		
208400-	SWITZ.	10"	1950	
210700-	SWITZ.	10"	1950	
238000-	FRANCE	10"	2	
238100-	FRANCE	10"	2	
238200-	FRANCE	10"	2	
(238262=Mar.1937 : 238467=Apr.1938)				
238800-	FRANCE	10"	2	
(238895/May 1939)				
239500-510	FRANCE		1936/37	
249000-005	FRANCE		1936/37	
250000-	FRANCE	10"	1930's	
(250939=Jan.1937 : 250941=Mar.1937)				
253000-	GERMANY	10"	1920's-	Blue
(253769=1933)				
270000-	TURKEY	10"		MG
273000-	SPAIN			
275000-	TURKEY	10"		
277000-	FRANCE			
279000-	FRANCE	10"	1930's	
(279057-077=Jan.1937 : 279078-079=Feb.1937				
279080-096=Mar.1937 : 279097-115=Apr.1937				
279116-119=May 1937 : 279120-153=Jun.1937				
279154-207=Jul.1937 : 279208-209=Sep.1937				
279210-221=Oct.1937 : 279222-267=Nov.1937				
279268-284=Dec.1937 : 279285-310=Jan.1938				
279311-342=Feb.1938 : 279343-366=Mar.1938				

ODEON (cont)

279367-384=Apr.1938 : 279385-409=May 1938
 279410-429=Jun.1938 : 279411-456=Jul.1938
 279457-485=Sep.1938 : 279486-490=Oct.1938
 279491-505=Nov.1938 : 279506-515=Dec.1938
 279516-530=Jan.1939 : 279531-537=Feb.1939
 279538-556=Mar.1939 : 279557-558=Apr.1939
 279559-587=May 1939 : 279588-601=Jun.1939
 279602-620=Jul-Aug.1939 : 279830=1950 catalogue)
 281000- FRANCE 10" 1930's
 (281088-108=Jan.1937 : 281109-120=Feb.1937
 281120-134=Mar.1937 : 281135-150=Apr.1937
 281151-159=May 1937 : 281160-175=Jun.1937
 281176-187=Jul.1937 : 281188-197=Sep.1937
 281198-200=Oct.1937 : 281201=Nov.1937
 281202-220=Dec.1937 : 281221-235=Jan.1938
 281236-244=Feb.1938 : 281245-249=Mar.1938
 281250-253=Apr.1938 : 281254-259=May 1938
 281260-269=Jun.1938 : 281270-273=Jul.1938
 281274-279=Sep.1938 : 281280-285=Oct.1938
 281286-288=Nov.1938 : 281289-295=Dec.1938
 281296-302=Jan.1939 : 281303-310=Feb.1939
 281311-328=Mar.1939 : 281329-356=Apr.1939
 281357-360=May 1939 : 281361-374=Jun.1939
 281375-378=Jul.1939 : 281998=1950 catalogue)
 282001-104=1950 catalogue)
 284000- ARGENTINA 10" 2
 287000- EGYPT 10" 2
 291000- ARGENTINA 10" 2
 292000- FRANCE 10" 2
 295000- ARGENTINA 10" 2
 297000- FRANCE 10" 1930's
 (297050=Feb.1937)
 297300- TURKEY 10"
 302000- GE 10" 2 MG
 303000- GE 10" 2 MG
 304000- HEBREW 10" to '25 MG
 306000- GE 10" 2 MG
 308000- GE 10" 2 MG
 311000- GE 10" 2 MG
 (acoustic)
 311488- 2 Green
 317000- GE 10" 2 MG
 401000- HEBREW 10" to '25 MG
 60000-60999 FRANCE 10" 1904-09 MG

ODEON MATRIX PREFIXES FOR OVERSEAS RECORDINGS
1926-1953

These prefixes can be found either in the wax or on the label. They will always be followed by the allocated matrix number. Many matrix prefixes have yet to be discovered, and the following list is therefore far from complete. The location of an Odeon recording is often (but not always) stated on the label.

PREFIX	COUNTRY	LOCATION
10" masters		
AB	Albania	Probably Tirana
BA	Argentina	Buenos Aires
BE	Germany	Berlin
BUO	Bulgaria	
C	Argentina	Buenos Aires
CO	Turkey	Constantinople
CX	Turkey	Probably Constantinople
DA	Holland	Amsterdam
ES	Persia	
EX	Egypt	
FO	Belgium	Brussels
GO	Greece	Athens
HKO	Hong Kong	
HO	Hungary	
JAB	Java	
KI	France	Paris
L	Argentina	Buenos Aires
MO	Italy	Milan
NI	West Africa	Probably Nigeria
OG	Portugal	Largely Lisbon, sometimes Oporto: Also Portuguese recordings made in Paris & Berlin.
RIO	Brazil	Rio de Janeiro
SO	Spain	
TEB	China	
TX	Turkey/Greece	Possibly Turkish music recorded in Athens
W	Spain	
XBO	Switzerland	Zurich
XP	France	Paris
12" masters		
XX	Germany	Berlin
XXB	Germany	Berlin
XXOG	Portugal	Including Portuguese recordings made in Paris & Berlin.
XXUG	Portugal	

PARLOPHON/PARLOPHONE

Originally a Lindstroem label, German in origin, spelled "Parlophon" and first used on early Lindstroem talking machines.

Parlophon machines and records were introduced into the UK after the 1914-18 European war. Lindstroem labels, including Parlophon, were purchased by Columbia in 1926 and subsequently merged into EMI in 1931, when the name was anglicised to Parlophone. This listing contains all known prefixes and series, regardless of their origin.

NB: Most European Parlophone catalogues prior to the merger follow the original German scheme, using different sections of the allocated numerical series.

French Parlophones used D- & P- suffixes rather than any prefix system.

Abbreviations;

MG = Manufactured in Germany

MUK = Manufactured in UK

PRI = Primrose Label

Where series date parameters are definitely known, they are indicated by the date. Where they are approximate they are indicated thus;

1. pre 1925(Acoustic)
2. 1925-1940's
3. 1940's-on

Bibliography; Badrock : Gellat : Read & Welch : Rust (2)

PREFIX	SERIES	COUNTRY	SIZE	DATES	COMMENTS
A	2000-3999	AUSTRALIA	10"	2	
A	3000-	AUSTRALIA	10"	2	
A	4000-	AUSTRALIA	12"	2	
A	4000-4999	GERMANY	10"	2	
A	5000-	AUSTRALIA	12"	2	
A	6000-	AUSTRALIA	10"	2	
A	7000-	AUSTRALIA	10"	2	
AA		ITALY	10"	2	CETRA'S
AB		ITALY	12"	2	CETRA'S
AKB		W.AFRICA	10"		
AR	100-	AUSTRALIA	10"		
AR	1000-	AUSTRALIA	12"		
AR	1100-	AUSTRALIA	12"		
AT		ITALY	10"	2	CETRA'S
B	5000-	GERMANY	10"	2	ORIG.BEKA
B	6000-	ITALY	10"	2	
B	7900-	ITALY	10"	2	
B	8000-	ITALY	10"	2	
B	10000-	BALKANS	10"	2	

PARLOPHONE (cont)

B	11000-	GERMANY	10"	2	ORIG.BEKA
B	21000-	GREECE	10"	2	
B	25000-	SPAIN	10"	2	
B	26000-	SPAIN	10"	2	
B	27000-	ITALY	10"	2	
B	27800-	ITALY	10"	2	
B	28000-	ARGENTINA	10"	2	
B	35000-	SWITZ.	10"	2	
B	37000-	GERMANY	10"	2	ORIG.BEKA
B	43000-	AFRICA	10"	2	Prob.MG
B	48000-	GERMANY	10"	2	ORIG.BEKA
B	49000-	GERMANY	10"	2	ORIG.BEKA
B	71000-	ITALY	10"	2	
B	74000-	GREECE	10"	2	Red
B	86000-	W.AFRICA	10"	2	
BB		ITALY	12"	2-3	CETRA'S
BX	6000-	ITALY	10"	2	
BX	7900-	ITALY	10"	2	
BX	8000-	ITALY	10"	2	
BX	27800-	ITALY	10"	2	
BX	28500-	ITALY	10"	2	
BX	71000-	ITALY	10"	2	
C	6000-	ITALY	10"	2	
C	7900-	ITALY	10"	2	
C	8000-	ITALY	10"	2	
C	8500-	ITALY	10"	2	
C	27800-	ITALY	10"	2	
C	28500-	ITALY	10"	2	
C	71000-	ITALY	10"	2	
CB		ITALY	12"	2	CETRA'S
CC		ITALY	12"	2	CETRA'S
CE	11000-	SCOTLAND	10"		
CO		BELGIUM			
DC		ITALY	10"		CETRA'S
DD		ITALY	10"		CETRA'S
DO		DENMARK			
DP	1-	EXPORT		1940's	MUK:Blue
		(Reissues, incl. Greek, Portuguese and South American)			
DPD		GUYANA	10"		MUK
DPE	1-	ENGLAND	10"	1941-	
DPE	8000	MALAYSIA		1940's	MUK
DPF	1-	FRANCE	10"		MUK
DPG	1-	GREECE	10"		
DPQ	1-82	ITALY		3	
DPT	1-	TURKEY	10"	2-3	MUK
DPY		FINLAND			MUK
DPX		ENGLAND	12"	2	EXPORT:Blue
DPW		GERMANY	10"	3	MUK
DR		ITALY	10"		CETRA's
E	3000-	IRISH & SCOTTISH	10"		
		(Celtic series ; 3051=Dec 1924			
		3199=Dec 1925 : 3204=Jan 1926)			
		3553=Nov 1928 : 3679=June 1930			

PARLOPHONE (cont)

E	4000-	W.INDIAN 10" 1924	MUK:Okeh's
E	4110-	IRISH & SCOTTISH 10"	
		(continuation of Celtic series; 4110=Dec 1935 : 4113=Dec 1936)	
E	4500-	ENGLAND 10" 1928-	
E	5000-	ENGLAND 10"	
		(5078=Oct 1923 : 5193=June 1924 : 5359=June 1925 5602=July 1926 : 5803=June 1927 : 5988=June 1928)	
E	6000-	ENGLAND 10"	
		(6092=Nov 1928 : 6152=July 1929 : 6293=June 1930 6421=June 1931 : 6428=Sep 1931)	
E	10000-	ENGLAND 12"	
		(10050=Oct 1923 : 10212=Dec 1924 : 10400=Jan 1926 10575=June 1927 : 10646=Jan 1928 : 10793=Jan 1929 10934=Dec 1929 : 11002=June 1930 : 11076=Dec 1930 11170=Dec 1931 : 11221=Dec 1932 : 11239=Dec 1933 11261=Dec 1934 : 11286=Dec 1935 : 11313=Dec 1936 11343=Dec 1937 : 11385=Dec 1938 : 11430=Dec 1939 11451=Dec 1941 : 11457=Dec 1947 : 11462=Dec 1948 11470=Dec 1949 : 11483=Dec 1950 : 11494=Dec 1951 11506=Dec 1952 : 11514=Dec 1953 : 11515=Dec 1954 11516=July 1955)	
EI		ITALY 10" 2	CETRA'S
ET		ITALY 12" 2	CETRA'S
F	100-	ENGLAND 10"	Magenta
		(173=June 1935 : 340=Dec 1935 : 499=July 1936 803=June 1937 : 1128=June 1938 : 1452=June 1939 1736=June 1940 : 1836=June 1941 : 1912=June 1942 1982=June 1943 : 2025=June 1944 : 2076=June 1945 2153=June 1946 : 2225=June 1947 : 2298=June 1948 2361=June 1949 : 2416=June 1950 : 2464=June 1951 2494=June 1952 : 2516=June 1953 : 2536=June 1954)	
F	3000-4000	IRISH & SCOTTISH 10"	
		(Celtic series : 3324=June 1937 : 3338=Dec 1938 3349=June 1941 : 3354=June 1942 : 3361=June 1946 3368=June 1947 : 3378=June 1948 : 3387=June 1949 3396=June 1950 : 3415=June 1951 : 3434=June 1952 3454=June 1953 : 3480=June 1954 : 3503=June 1955 3507=Dec 1956)	
FP		ITALY 10" 2	CETRA'S
GP	91000-93251	ITALY 10"	
K	13000-	ITALY 10"	
IT		ITALY 10" 2	CETRA'S
L		SERBIA 10"	
LL		ITALY 10" 2	POLYDOR
MO	100-110	10" 2	MUK
		(Music Of The Orient series-including Bali, China, Indonesia, Java, Persia & Siam)	
MP	1-	TRINIDAD 10" 1930's-	
		(Calypso series)	
MSP	6000-	ENGLAND 10"	
NPS		NORWAY	
OD		AUSTRALIA 10" 2	ODEON's
OL		ITALY 10" 2	POLYDOR

PARLOPHONE (cont)

OR		ITALY 12" 2	POLYDOR
OT	100-	ARGENTINA 10"	MUK:ODEON's
		(Tango series : 120=Dec 1933 : 123=Dec 1934 135=Dec 1935 : 145=Dec 1936 : 157=Dec 1937 165=Dec 1938 : 174=June 1939 : 191=June 1941)	
P	8500-	ITALY 12" 2	
P	8900-	ITALY 12" 2	
P	9000-	GERMANY 12" 2	
P	9800-	ITALY 12" 2	&GERM.
P	9800-	GERMANY 12" 2	&ITALY
P	56000-	ITALY 12" 2	
PA	100-	ITALY 10" 2	
PD		DENMARK 2	
PE		ITALY 12" 2	CETRA'S
PHD		HOLLAND	
PM	1-	PORTUGAL 10" 1946-	MUK
PNY	34000-	USA 10" 1929-31	
PO	1-	ENGLAND 10" 1929-	MUK/Brown
PO	500-650	W.AFRICA 10" 2-3	MUK/Lav.
PO	5000-		
PP	60000-	ITALY 12"	
PRA	500-	GREECE 10"	
PS			
PX	8500-	ITALY 12"	
PX	8900-	ITALY 12"	
PX	9800-	ITALY 12"	
PX	56000-	ITALY 12"	
PX	56500-	ITALY 12"	
PXO	1000-	10"	Brown
PXO	7000-	10" 2	AC
PZ	11100-	SWISS 10"	
R	100-	ENGLAND 10"	
		(113=July 1928 : 367=July 1929 : 657=June 1930 927=June 1931 : 1216=June 1932 : 1524=June 1933 1840=June 1934 : 2078=June 1935 : 2225=July 1936 2346=June 1937 : 2520=June 1938 : 2677=June 1939 2745=June 1940 : 2795=June 1941 : 2843=June 1942 2877=June 1943 : 2939=June 1944 : 2972=June 1945 3003=June 1946 : 3042=June 1947 : 3116=June 1948 3202=June 1949 : 3294=June 1950 : 3404=June 1951 3544=June 1952 : 3703=June 1953 : 3878=June 1954 4035=June 1955 : 4185=June 1956 : 4325=June 1957) (including much U.S. jazz & some blues)	
R	3300-	IRELAND & SCOTLAND 10"	
		(Celtic series; 3324=June 1927 : 3428=Jan 1928)	
R	3850-	TRINIDAD 10" 1924	MUK:Okehs
R	10000-	ENGLAND 10"	
R	20000-	ENGLAND 12" 1924-53	ODEONS
R	30000-	ENGLAND 12" 2	CETRAS
RD		ITALY 12" 2	CETRAS
RO	20000-	ENGLAND 10" 2	ODEONS
RR		ITALY 12" 2	POLYDOR
SS		ITALY 12" 2	CETRA'S
SW	1-	ENGLAND 12" 2	SOCIETY
SW	8000-	ENGLAND 12"	A/C/Brown

160

(12)

Ethnic & Vernacular Music

PARLOPHONE (cont)

TI		ITALY	10"	2	CETRA'S
TT	9200-	ITALY	10"		
UTC	1-	W.AFRICA	10"	1951-	MUK
		(Specially pressed for the United Trading Company of Switzerland)			
VDL	100-	PAKISTAN	10"		

WITHOUT PREFIX

1000-	BALKANS	10"	2	
1100-	BALKANS	10"	2	
1200-	BALKANS	10"	2	
1300-	BALKANS	10"	2	
1400-	BALKANS	10"	2	
3350-	MAORI	10"	2	MFF
8000	ITALY	10"	2	
9200-	HEBREW	12"	2	MFF
12801-12999	BRAZIL	10"	1929-	
13000-13437	BRAZIL	10"	1929-32	
	(Incl. Arabic recordings made in Rio de Janeiro)			
22000-	FRANCE	10"	2	
28000-	FRANCE	10"	2	
29000-	FRANCE	10"	2	
33300-	PORTUGAL	10"	2	MFG
48000-	PORTUGAL	10"	1	MFG
52000-	FRANCE	12"	2	
57000	HEBREW	12"	2	MFG
	(Deleted 1934)			
58000-	FRANCE	12"		
59000-	FRANCE	12"		
80000-	FRANCE	10"	2	
85000-	FRANCE	10"	2	
605500	GREECE	10"		

PATHE (cont)

Lindstrom / EMI period

PATHE (cont)

Electric recordings;

PREFIX/SERIES	COUNTRY	SIZE	DATES	
A 100-	PAKISTAN	10"	1948-	
CP 10.000-	TUNISIA	10"	1953-	
FR 191-203	TUNISIA	10"	1939	
MA	ITALY	10"		
MD	ITALY	10"	1951-	
MDT	ITALY	12"	1951-	
MG	ITALY	10"		
PA 1-1573	FRANCE	10"	1920's/30's Black	
(General series including Argentinian, Cuban, Hawaiian, Spanish & Tahitian)				
PAT 1-118	FRANCE	12"	1930's	
(Classical)				
PD 1-14	FRANCE			
PD'T 1-40	FRANCE	12"		
PG 1-99	FRANCE			
PGT 1-28	FRANCE	12"		
PI	GERMANY	10"	1951-	
PK	GERMANY	10"	1951-	
PM	GERMANY	12"	1951-	
PN	GERMANY	12"	1951-	
PPA	I'NATIONAL			
PPG	I'NATIONAL			
PR 101-169	ALGERIA	10"	1939-	
PV 100-411	N.AFRICA	10"	1947-51	MF
W 301-329	FRANCE	12"		
(Classical)				
W 901-979	FRANCE	12"		
(Classical)				
X 3300-3999	FRANCE	10"	1920's-	
X 4000-	PORTUGAL	10"	1920's-	
X 5100-5599	FRANCE	10"	1920's-	
X 6000-6999	FRANCE	10"	1920's-	
X 7100-7299	FRANCE	10"		
X 8500-9999	FRANCE	10"	1920's-	Black, Gold & Green
(Incl. Tahitian recordings)				
X 10470-10492	TUNISIA	10"	1926-	
X 10500-10800	N.AFRICA	10"	1920's	
X 10964-10985	TUNISIA	10"	1926-	
X 15201-15270	MOROCCO	10"	1939-	
X 15600-15799	ITALY	10"	1930's	
X 18200-18500	EGYPT	10"	1926	
X 18700-	N.AFRICA	10"	1927	
X 20700-	SPAIN	10"	1930's	
X 35000-	EGYPT			
	& SYRIA	10"	1926-	
X 38000-	MOROCCO	10"	1930's	
X 40000-	ITALY	10"	1930's	
X 44000-	ALBANIA	10"	1930's	
X 45100-	GERMANY	10"	1930's	MF
X 57000-	N.AFRICA	10"	1920/30's	MF
X 58101-58388	MOROCCO	10"	1920/30's	MF

X	59000-59316	TUNISIA	10"	1926-	
X	60000-	HUNGARY	10"	1930's	MF
X	61000-	GERMANY	10"	1930's	MF
X	65000-	TUNISIA	10"	1930s	
X	70000-		10"		MF
X	79000-	E.AFRICA	10"	1930's	
X	80000-	GREECE	10"	1930's	MF
X	80100-		10"	1930's	MF
X	90000-94499	FRANCE	10"	1930's	MF
X	96000-	CUBAN	10"	1930's	Black&Gold
X	96100-	MADAGASCAR	10"	1930's	
		& SOMALI			
X	96200-96399	FRANCE	10"	1930's	MF
X	98000-98299	FRANCE	10"	1930's	MF
X	70000-	INDOCHINA	10"	1920's	
XW		LANGUAGE COURSES			

The Lindström project:

- Create an international history of the Lindström company, tracing the changes in the company's organisation over the years
- Create histories of Lindström in each country, showing the activities of local Lindström companies and agents

The Lindström project (cont.)

- Create a discography of the Lindström company (and affiliated companies), showing the production of recordings on various labels in each country, with the aid of catalogue and matrix series.